

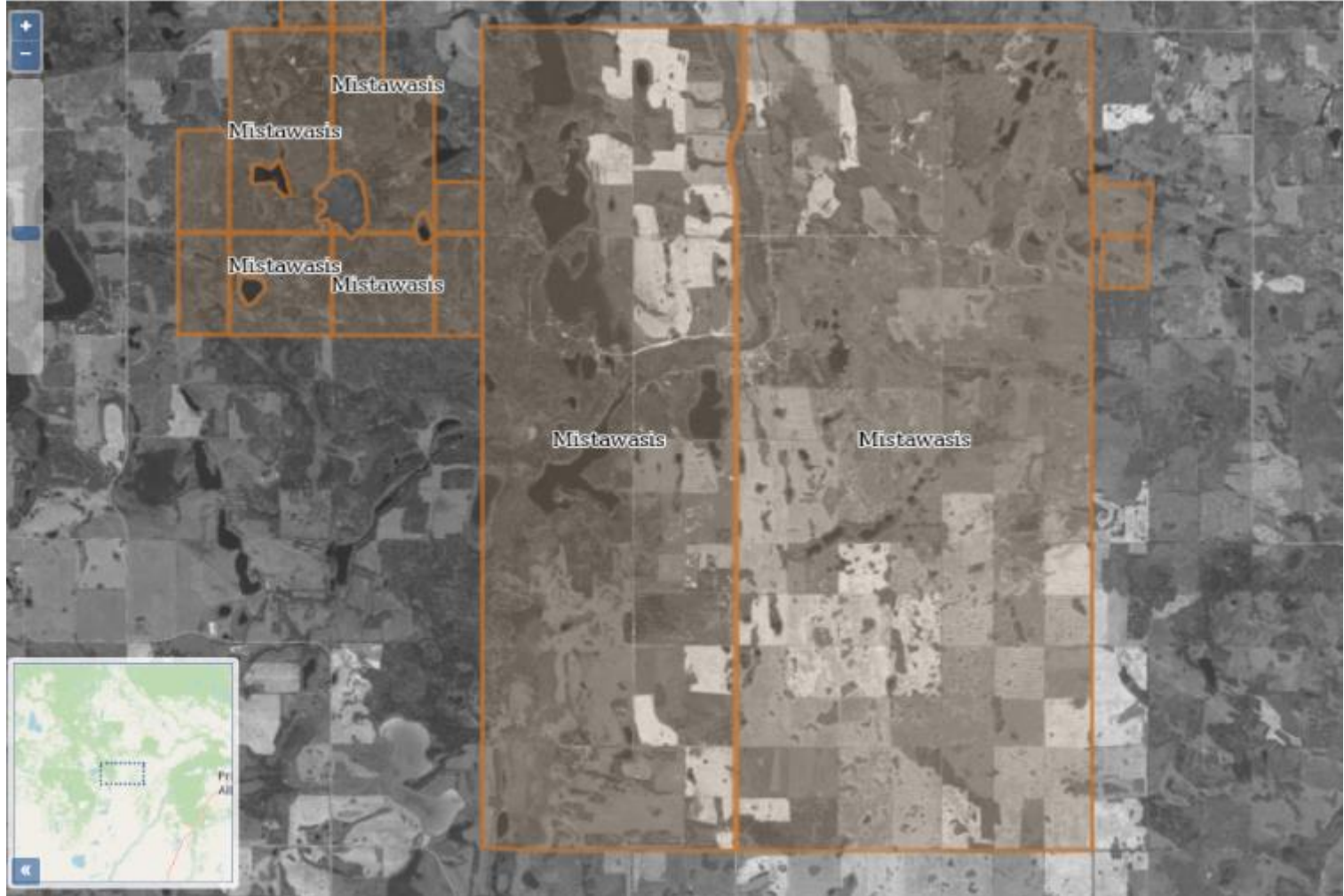


Mistawasis Nêhiyawak

Bridge to Land Water Sky

Mistawasis Nêhiyawak






Mistawasis
Nêhiyawak



Muskeg Lake Cree Nation



Starting in a Good Way:
Honouring our Partnership between Nations

An aerial photograph of a lush green agricultural field, possibly a rice paddy, with a central path or canal running through it. The text is overlaid on the left side of the image.

Bridge Goals: Regenerative Agriculture for Natural Climate Solutions.

- **1) Improve land management strategies**
- **2) Increase food security and sovereignty**
- **3) Protect biodiversity and water**
- **4) Create employment and learning opportunities for youth and communities**
- **5) Reimagining Indigenous landowner and producer relationships**

Land Management: Before and After Land Code



CANADA

CONSOLIDATION

CODIFICATION

Indian Act

Loi sur les Indiens

R.S.C., 1985, c. I-5

L.R.C. (1985), ch. 11

Strengthen and Empower a Prosperous Mistawasis



Mistawasis Land Code

Dated: May 13, 2016



The Living Lab Model: A Good Fit

- Land use decisions as solutions
- Envision and implement change
- Incorporate Indigenous values into land management
- Partner with organizations and producers
- Meaningful consultation with people and the land

The land has changed

NE-16-48-06-W3
1968 imagery




0 25 50 m



Slide credit: Melissa Arcand and Jer



NE-16-48-06-W3

-  2021 - Bare soil boundary
-  2017 - Bare soil boundary
-  2014 - Bare Soil boundary

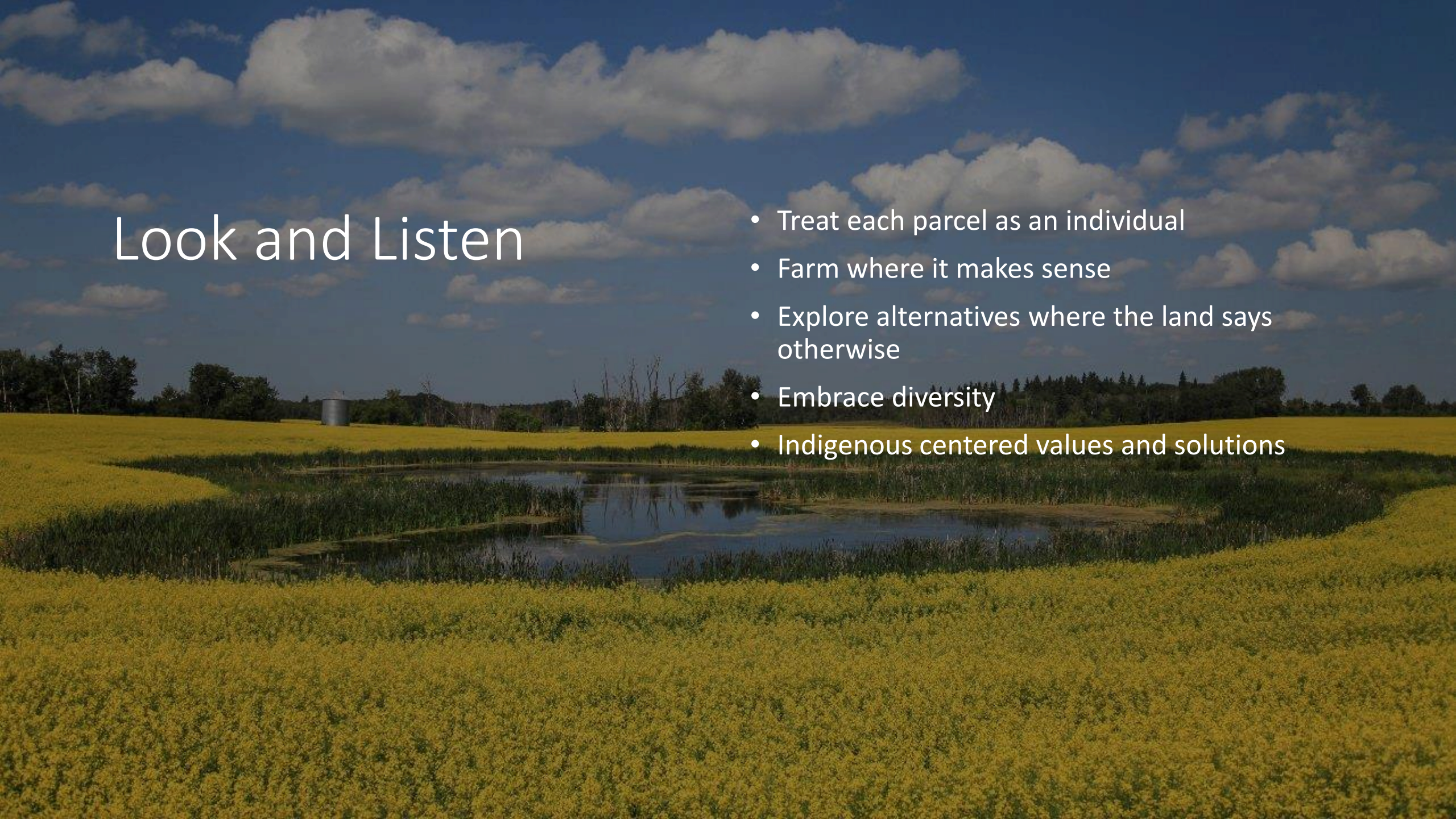
0 25 50 m



Slide credit: Melissa Arcand and Jer

Look and Listen

- Treat each parcel as an individual
- Farm where it makes sense
- Explore alternatives where the land says otherwise
- Embrace diversity
- Indigenous centered values and solutions





Empowered by our Partnership with AAFC



Treaty 6

1876 Chief Mistawasis encountered a changing social climate.

The first to sign, he chose the path of partnership as a way forward for his people.

In 2023, we face a changing physical climate.

We choose to follow his leadership and work together to find a way forward.





JOIN US, BUILD THE BRIDGE
www.bridgetolandwatersky.ca